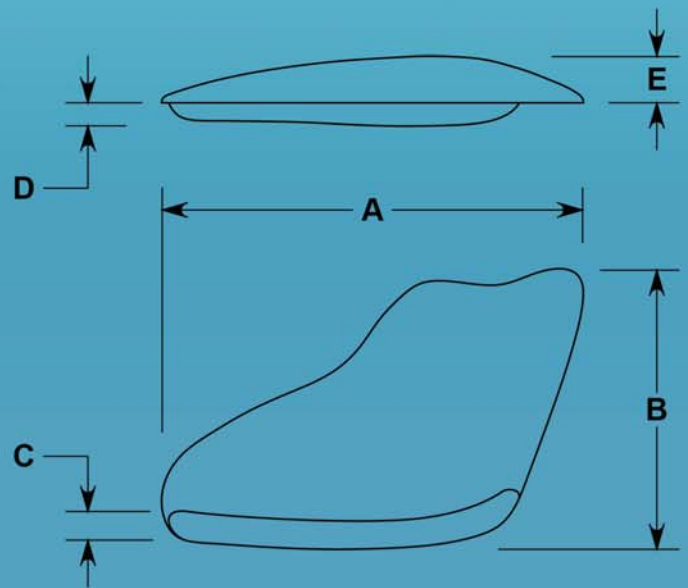
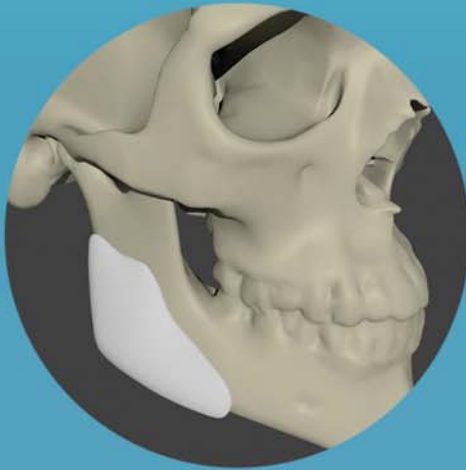


Lateral Augmentation Mandible

- Laterally augments the mandible
- Inferior ridge allows for proper placement against the mandible with minimal need for reshaping
- Fully porous material for tissue ingrowth
- Implant bends and holds desired shape without heating
- Screws or sutures can be placed in any desired location
- Easy to trim with scissors or scalpel
- Individually packaged, MR Safe, Sterile, 5 Year Shelf Life



CAT#	Description	A	B	C	D	E
4305	Regular - Left	47mm	38mm	3mm	3mm	6.5mm
4306	Regular - Right	47mm	38mm	3mm	3mm	6.5mm
4307	Large - Left	57mm	40mm	4mm	3mm	10mm
4308	Large - Right	57mm	40mm	4mm	3mm	10mm

