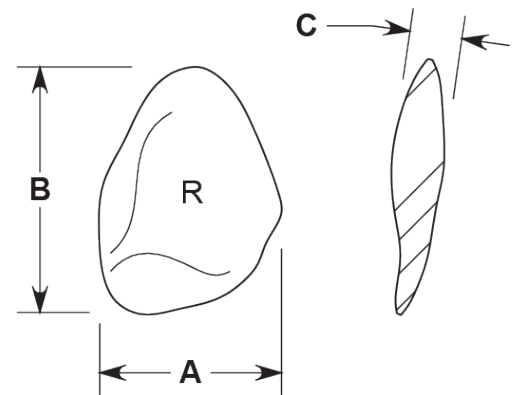
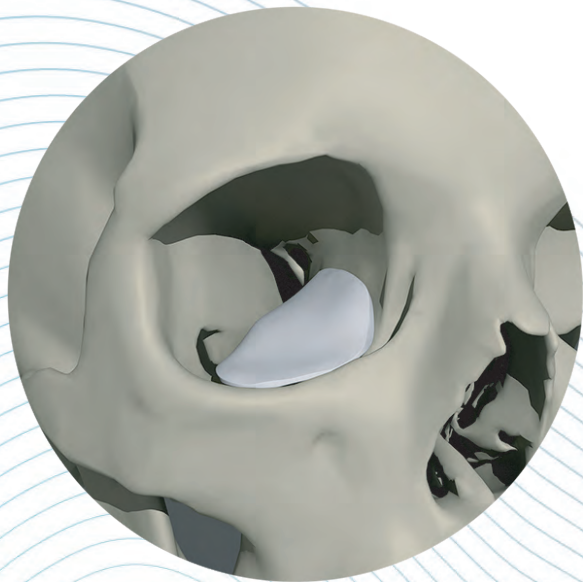


## Surgical Implants

- Provides volume needed to correct superior sulcus deformity in patients with enophthalmos
- Mimics the shape and contour of the orbital floor
- Placed into the subperiosteal space
- Fully porous to promote tissue ingrowth and facilitate implant stabilization
- Can be fixated with screws or sutures
- Easy to trim with fluted burr or scalpel
- Individually packaged, MR Safe, Sterile, 5 Year Shelf Life



CAT#	Description	A	B	C
4180	Regular - Left	24mm	33.5mm	7mm
4181	Regular - Right	24mm	33.5mm	7mm
4182	Large - Left	28mm	40mm	7.5mm
4183	Large - Right	28mm	40mm	7.5mm

