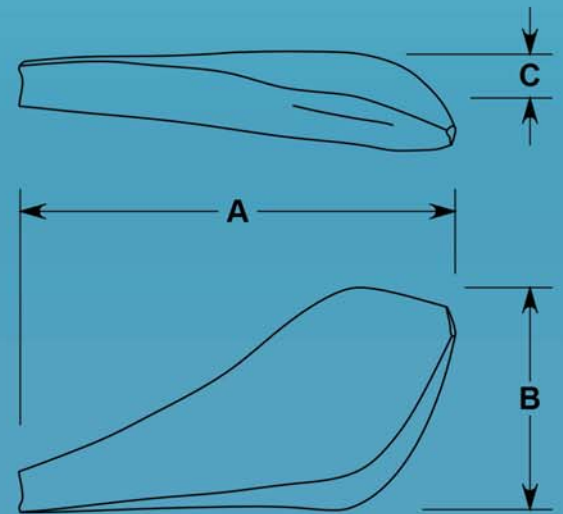
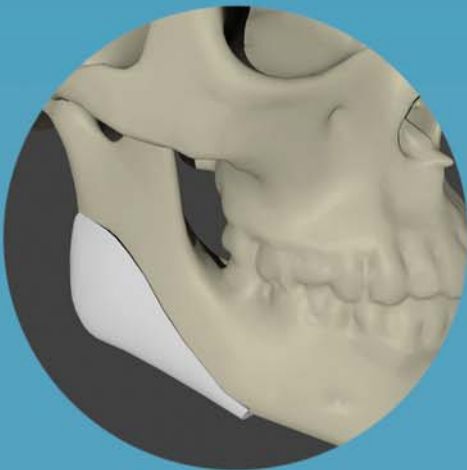


Contoured Mandibular Angle

- Subtly augments the mandible
- Anatomic shape mimics the shape of the inferior borders of the mandibular angle
- Provides more natural fit against mandible with minimal need for reshaping
- Fully porous material for tissue ingrowth
- Implant bends and holds desired shape without heating
- Screws or sutures can be placed in any desired location
- Easy to trim with scissors or scalpel
- Individually packaged, MR Safe, Sterile, 5 Year Shelf Life



CAT#	Description	A	B	C
4303	Left	59mm	29mm	7mm
4304	Right	59mm	29mm	7mm

